



JULY 2020

# CHAMPION ENGINEERS

**Capability Statement**



# CAPABILITY STATEMENT

## CONTENTS

*Our Mission*

*Company Overview*

*Services Provided*

*Industries Serviced*

*Our Clients*

*Our Projects*

*Contact Us*

# OUR MISSION

## MISSION STATEMENT

*We aim to deliver a high-quality service with a personalised touch for our clients. In all disciplines of engineering design, we strive to produce the most appropriate solutions which best meet our clients requirements in technical and economic terms, taking into account not only the initial upfront costs but the full life cycle cost of projects.*





# COMPANY OVERVIEW

EST 2002

*Champion Engineers is a multi-disciplinary consulting engineering firm that provides design, detailing and project management services. Our broad range of offerings provide support to asset owners and principal contractors from the concept design through to commissioning and handover. In addition, Champion Engineers undertake asset management services throughout the asset lifecycle.*



*CHAMPION ENGINEERS*

*We have a strong focus on industrial structures and systems including heavy industrial design, however regularly also provide services for:*

- Commercial & Residential Buildings*
- Civil Works*
- Public Health*
- Road & Rail Transportation*
- General Engineering Sectors*



# OUR SERVICES



## STRUCTURAL Engineering

- Concept Design of Concrete, Steel, Masonry, Timber & Aluminium Structures
- Condition & Repair Assessments & Monitoring
- RPEQ Certification



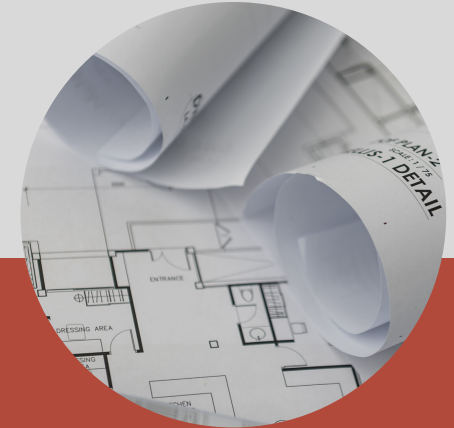
## CIVIL Engineering

- Concept Design
- Foundation Engineering
- Stormwater Drainage
- Condition & Repair Assessments & Monitoring
- RPEQ Certification



## MECHANICAL Engineering

- Concept Design
- Piping Systems
- Conveyor Systems
- Condition & Repair Assessments & Monitoring



## FOR CONSTRUCTION Documentation

- For Construction Detailed Drawings
- Scope of Works
- Bills of Quantities
- Specifications
- Other as required

# OUR SERVICES



## PROJECT MANAGENT

### Support Services

- Preparation of Scope of Works
- Construction Sequence Planning
- Workpack Preparation
- Cost Estimating
- Cost Management
- Database & Systems Management
- Secondment



## 3D SCANNING

### Site Measure

- Onsite 3D Scanning
- Internal Equipment and Technicians
- Overlaying and Registration of Scan Data
- Refinement of Point Cloud Data
- Extraction and Preparation of Colourised 3D Point Cloud
- Onsite (real time) Review of Point Cloud Data



## POINT CLOUD PROCESSING

### Documentation

- Importing 3D Point Clouds
- Cleaning and Editing of 3D Point Clouds
- Modelling of 3D Point Cloud Data
- Clash Analysis through Overlay of 3D Point Cloud over Existing 3D Model

# INDUSTRIES SERVICED



***Mining & Processing***



***Ports***



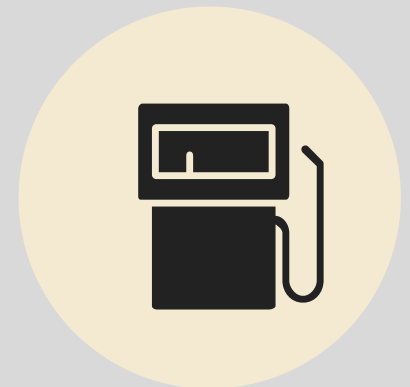
***Power Generation***



***Sugar Milling  
& Refining***



***Commercial & Industrial  
Buildings***



***Oil, Gas &  
Petrochemicals***



# OUR CLIENTS

*Champion Engineers has maintained a strong and consistent client base across market segments and geographical locations. Clients include; major miners, coal ports, infrastructure operators, sporting & social clubs, local contractors and developers. See below some of our major clients for reference:*

The BHP logo consists of the letters "BHP" in a bold, orange, sans-serif font.The logo for Dalrymple Bay Coal Terminal Pty Ltd features a stylized globe icon to the left of the text "DALRYMPLE BAY COAL TERMINAL PTY LTD" in a blue, sans-serif font.The Melco Engineering Pty Ltd logo features a stylized blue and green "M" icon to the left of the text "MELCO ENGINEERING PTY LTD" in a blue, sans-serif font.The Mackay Sugar logo features a stylized green and yellow sun icon to the left of the text "Mackay Sugar" in a blue, sans-serif font, with "Member of Nordzucker Group" in smaller text below.The QBuild logo features a stylized blue and yellow flame icon to the left of the text "QBuild" in a blue, sans-serif font.The Glencore logo consists of the word "GLENCORE" in a blue, sans-serif font.The DGC logo consists of the letters "DGC" in a blue, sans-serif font, with a stylized blue circle to the right.The North Queensland Bulk Ports Corporation logo features a stylized blue and green wave icon to the right of the text "NORTH QUEENSLAND BULK PORTS CORPORATION" in a blue, sans-serif font.The QSL logo features a stylized yellow and green wave icon to the left of the text "QSL" in a blue, sans-serif font.The BAE logo features the letters "BAE" in a red, sans-serif font, enclosed within a red, stylized oval shape.The Wilmar logo features a stylized green and blue wave icon to the left of the text "wilmar" in a blue, sans-serif font.The Adani Australia logo features the word "adani" in a blue, sans-serif font, with "Australia" in a smaller, blue, sans-serif font below it.The MAI Mackay Aluminium Industries logo features the letters "MAI" in a large, stylized, grey font, with "MACKAY ALUMINIUM INDUSTRIES" in a smaller, grey, sans-serif font below it.The DGH Engineering logo features a stylized gear icon to the left of the text "DGH ENGINEERING" in a red, sans-serif font, with "a wealth of experience" in a smaller, blue, sans-serif font below it.The DBCT Management logo features a stylized blue wave icon to the left of the text "DBCT MANAGEMENT" in a blue, sans-serif font.The Harrup Park Country Club logo features a stylized blue and green wave icon to the left of the text "Harrup Park" in a blue, sans-serif font, with "Country Club" in a smaller, blue, sans-serif font below it.The QUT logo consists of the letters "QUT" in a white, sans-serif font, set against a blue square background.The Queensland University of Technology logo features the text "Queensland University of Technology" in a blue, sans-serif font.

# OUR PROJECTS

## INDUSTRIAL SHEDS



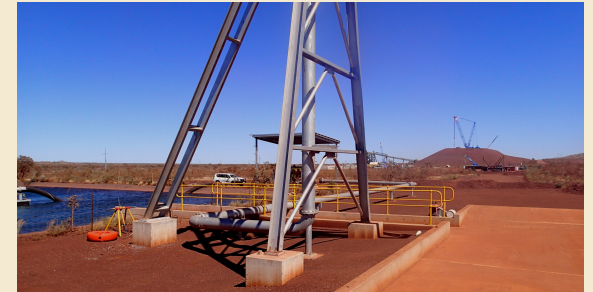
Design, Detailing, Project  
Management

## BIO-COMMODITIES ETHANOL PLANT



Design, Detailing, Construction  
Support

## TRUCK FILLING FACILITY



Design, Detailing, Construction  
Support

## COMMERCIAL SHEDS



Design, Detailing, Project  
Management

## TENNIS FACILITY EXPANSION



Design, Detailing, Project  
Management

## SHOOTING RANGE DEVELOPMENT



Design, Detailing, Project  
Management

# OUR PROJECTS

## DRAGLINE FAN HOUSINGS



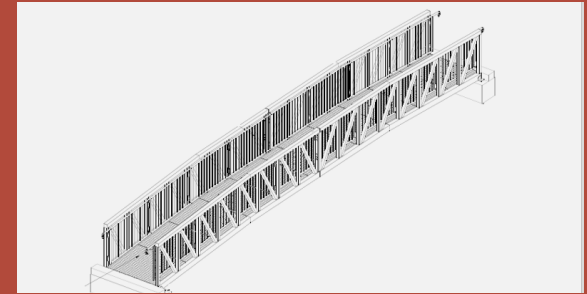
Design, Detailing, Construction Support

## CONVEYOR GANTRY REFURBISHMENTS



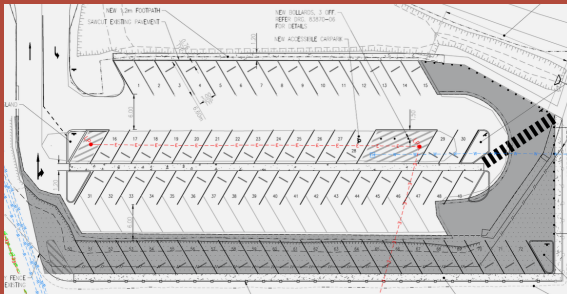
Audit Inspection, Engineering Review, Construction Support

## PEDESTRIAN BRIDGES



Design, Detailing, Construction Support

## SITE CAR PARK UPGRADES



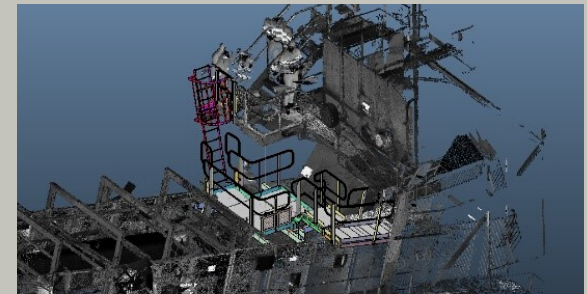
Audit Inspection, Design, Detailing, Construction Support

## SITE TRAFFIC MANAGEMENT AUDITS



Audit Inspection, Reporting

## SHIPLOADER ACCESS PLATFORMS



3D Scanning, Design, Detailing, Construction Support



# CONTACT US



## EMAIL

[info@championengineers.com.au](mailto:info@championengineers.com.au)



## PHONE

07 4944 0077



## OFFICE

Canegrowers Building, Level 2, 120  
Wood Street, Mackay QLD 4740



## WEBSITE

[www.championengineers.com.au](http://www.championengineers.com.au)